

Toyota Tacoma 2005-On Installation Manual

A. Door Panel Removal B. Mirror Installation

Items included in this bag:

1 Installation Manual

Tools Required:

Ratchet with extension or ratcheting
screwdriver

11mm socket

Socket wrench

Slotted screwdriver

Phillips screwdriver

Small Plastic Pry Bar

Sturdy gloves

Safety glasses or goggles



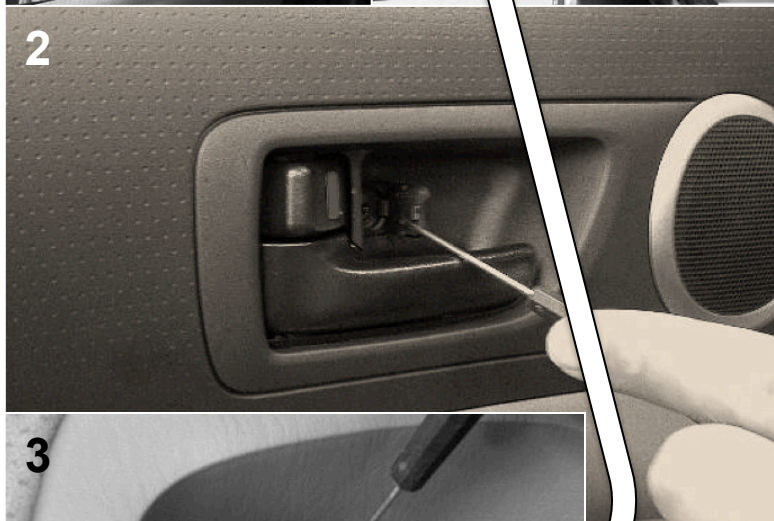
A. Door Panel Removal & B. Mirror Installation

1



1. Begin with opening the driver's side door and lowering the window. Unsnap corner plastic triangular cover.

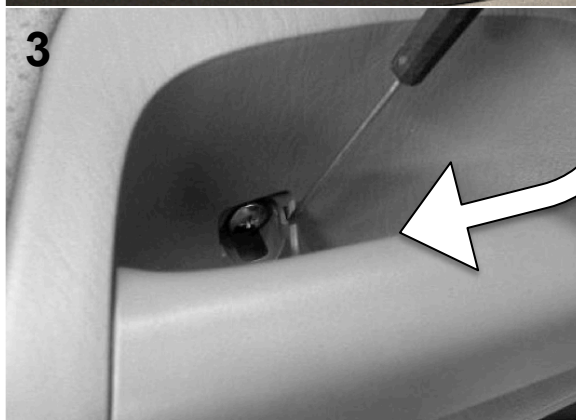
2



2. Carefully remove door handle cover using a slotted screwdriver. Remove screw in door handle with a Phillips screwdriver.

3. With the slotted screwdriver, remove plastic covering on the grab bar. Release the revealed screw using a Phillips screwdriver (Note: Some low trim models with manual window will not have this screw.)

3



4. Using a plastic pry bar, carefully unsnap and lift the control console. Disconnect all wiring connections behind control console and remove it. (Note: This only applies to models with power equipment)

4





5. Using a small Phillips screwdriver, push in the center post on the small retainer clip and release the clip from the door panel.

6. Carefully pry on the lower outboard corner of the door panel using a small plastic pry bar. Continue prying around the door panel until it unsnaps from the door frame. Lift up and pull door panel out a few inches away. Disconnect tweeter and wiring connection. Remove door panel and set it aside.



7. Disconnect mirror harness (circled) (Note: For mirror with power option only). Secure the mirror housing with one hand, remove the 3 nuts holding the mirror housing to the door frame using a 11mm socket. (WARNING: Not securing mirror housing with one hand before loosening the nuts could cause the mirror housing to fall and become damaged.)



8. Bolt the new tow mirror on and reconnect plug. Use the reverse steps above to finish installation. RH mirror installation will be performed in the same manner. For Plug & Play tow mirrors, the installation manual stops here.

*To Happy and Safe
Towing!*

Chrome LED Tow Mirror Shown